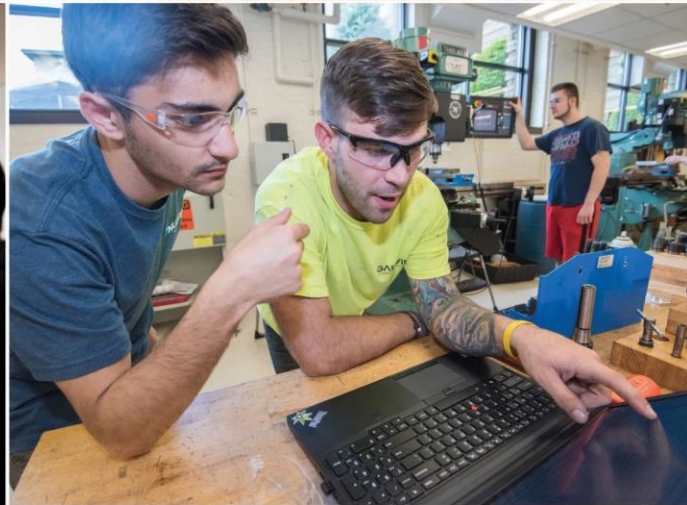


# ***YOU ARE WELCOME HERE***



# ***WENTWORTH BY THE NUMBERS***



- Total enrollment: 4,516
- 79% male, 21% female
- 64 countries represented on campus

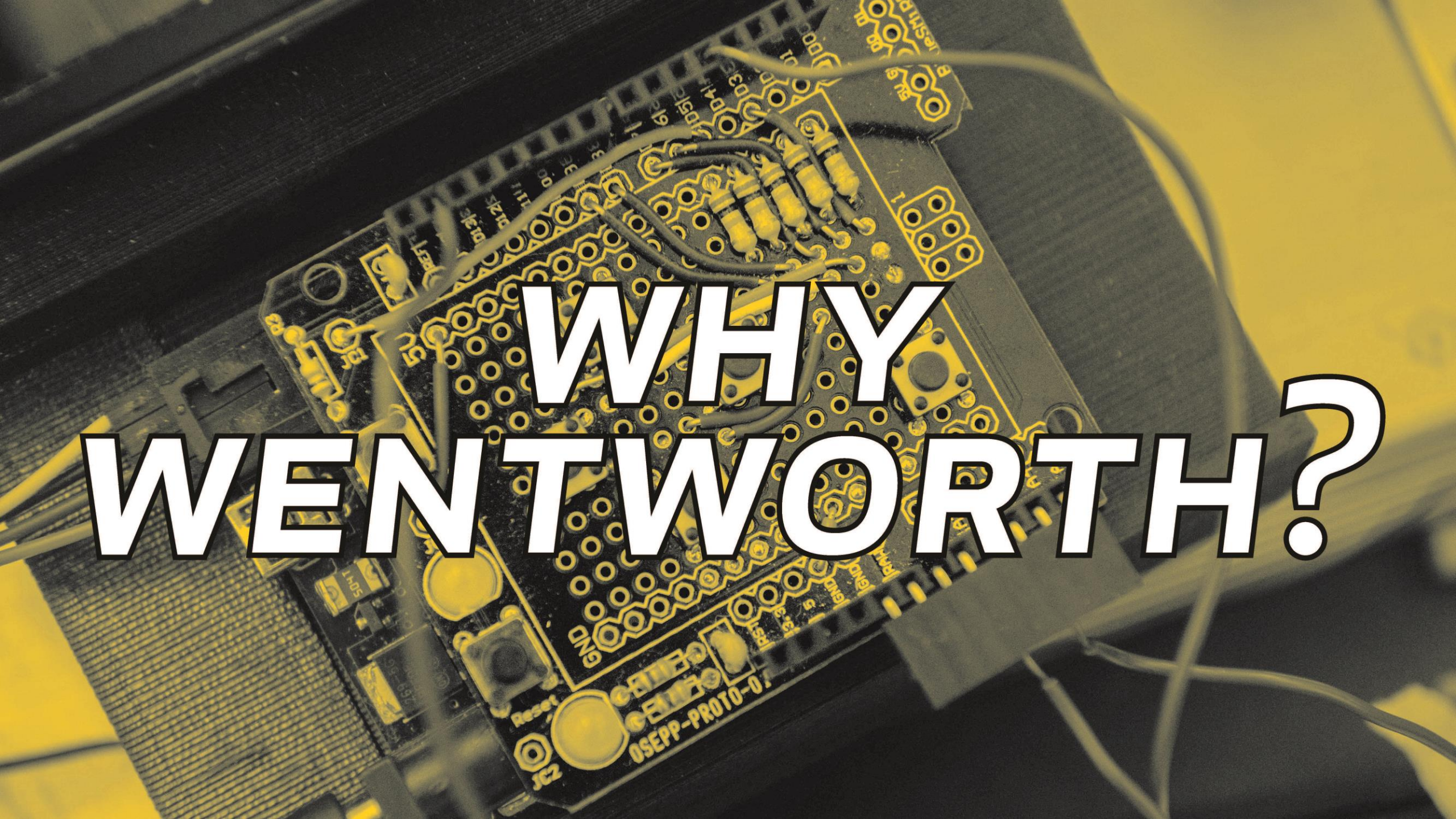


- **Applied Mathematics**  
Option for three- or four-year program
- **Applied Sciences**
- **Architecture**  
Architecture students can apply to a one-year Master of Architecture program
- **Biological Engineering**
- **Biomedical Engineering**
- **Business Management**  
Optional concentrations in Entrepreneurship or Technology Project Management
- **Civil Engineering**

## **MAJORS**

- **Computer Engineering**
- **Computer Information Systems**
- **Computer Networking**
- **Computer Science**
- **Construction Management**  
Optional concentrations in Commercial Real Estate or Facility Management
- **Cybersecurity**
- **Electrical Engineering**
- **Electromechanical Engineering**
- **Engineering**
- **Industrial Design**
- **Interior Design**
- **Mechanical Engineering**



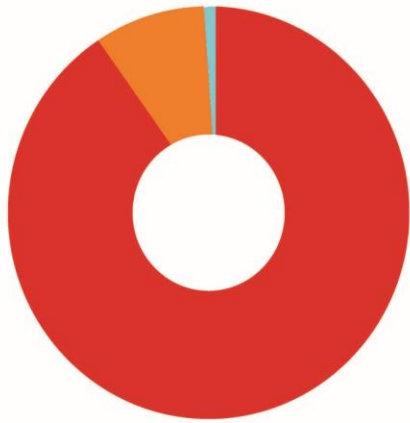


**WHY  
WENT TWORTH?**

# ***ACTION-ORIENTED LEARNING***



# HAVE YOU HEARD OF CO-OP?



- employed (90%)
- attending graduate school (9%)
- seeking employment (1%)

- A co-op is full-time, temporary employment in your field of study
- 2 semesters of full-time work in the US
- 32-40 hours per week, average \$14-\$20 per hour
- Work opportunities may be completed anywhere around the world



# CLOSE-KNIT COMMUNITY



# STUDENT ENGAGEMENT





# ***STUDENT SUPPORT SERVICES***

- Academic Advisors
- International Student Services Office
- Library and Learning Commons
- Center for Academic Excellence  
Tutoring, facilitated study groups, learning labs, review sessions and learning strategy consultations
- **Center for Wellness**  
Counseling Services  
Disability Services  
Wellness Education



# AT THE HUB OF THE HUB



- Rolling Admission
- Admission decisions within 3-5 weeks once all required materials are submitted
- Priority Deadline: December 15
- Regular Deadline: February 15

# ***ADMISSIONS PROCESS***



# APPLICATION REQUIREMENTS

- Application
- Personal Statement
- Letter of Recommendation
- High School Transcript
- \$50 application fee
- SAT/ACT optional
- English Proficiency
- TOEFL
  - Internet-based min: 79
  - Paper-based min: 550
- IELTS: 6.5 min. overall score, with no subscore below 5.5
- Study for 3 years or more at an English language-based high school (ex: an IB school, a US high school, an American high school abroad, etc.)



# ***TUITION & FINANCIAL AID***

## **Undergraduate Tuition (2019-20):**

- \$34,970 per academic year (includes laptop)
- Average Room and Board: \$14,526
- Merit scholarship up to \$18,000 and renewable all four years





# ***FOLLOW US ON SOCIAL MEDIA***

1.800.556.0610 or 617.989.4000

admissions@wit.edu | [wit.edu](http://wit.edu)

  @witadmissions

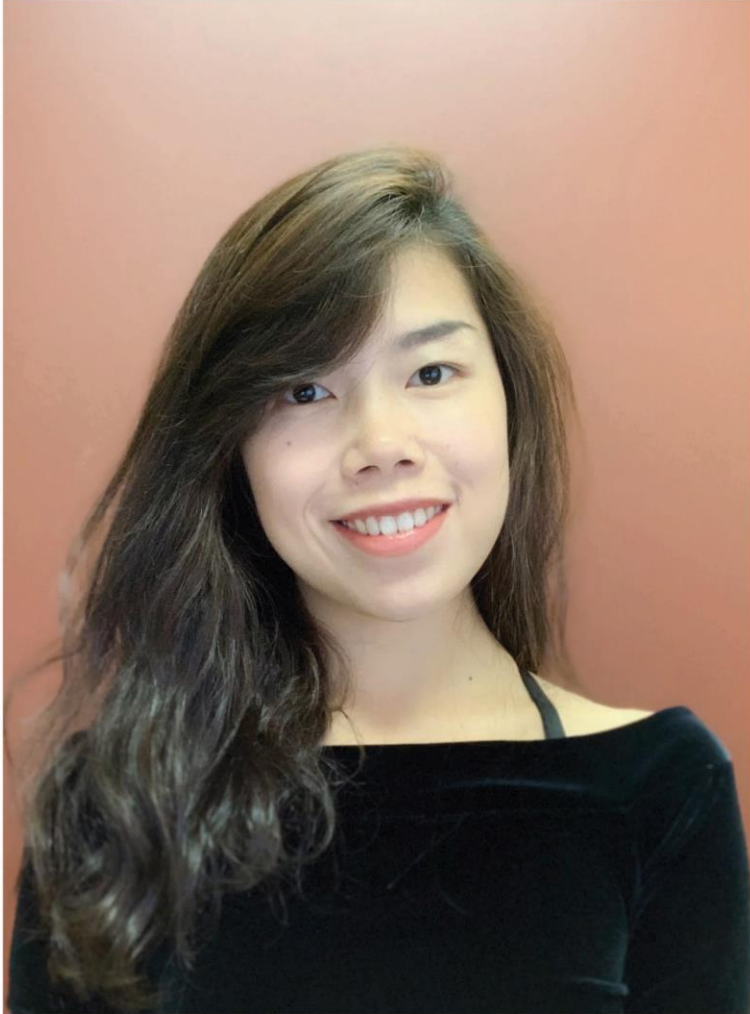
 witadmissions

 /wentworthadmissions

**You**  /WentworthInstTech

Digital Viewbook | [wit.edu/viewbook](http://wit.edu/viewbook)





**Pan Luo**

Associate Director of International Admissions  
Wentworth Institute of Technology

luop@wit.edu

617.989.4000