



Clarkson

# Today's Presenter



Colleen Flynn Thapalia  
Senior Director  
Graduate Recruitment & Enrollment Marketing







Undergraduate degrees  
Admission requirements  
Deadlines  
Cost of Attendance  
Scholarships  
Student & Residential experience



# Undergraduate Majors

---

## School of Arts & Sciences

American Studies

Applied Mathematics & Statistics

Biology

Biomolecular Science

Chemistry

Communication

Computer Science

Digital Arts & Sciences

History

Humanities

Interdisciplinary Liberal Arts

Interdisciplinary Social Sciences

Mathematics

Physics

Political Science

Psychology



# Undergraduate Majors (continued)

---

## Institute for a Sustainable Environment (ISE)

Environmental Science & Policy

Environmental Health Science

## David D. Reh School of Business

Financial Information & Analysis

Global Supply Chain Management

Business Intelligence and Data Analytics

Innovation & Entrepreneurship

Engineering & Management

## Wallace H. Coulter School of Engineering

Aeronautical Engineering

Chemical Engineering

Civil Engineering

Computer Engineering

Electrical Engineering

Environmental Engineering

Mechanical Engineering

Interdisciplinary Programs

Software Engineering



# Admission Requirements

---

- Common Application form
- Official secondary school transcript or mark sheets. National exam scores (if applicable)
- Two letters of recommendation
- SAT or ACT scores (test optional)
- English proficiency exam scores
  - TOEFL – 80
  - IELTS – 6.5
  - PTE – 56
  - Duolingo English Test – 115 /160





# Deadlines

---

Early Decision – December 1

Regular Decision – January 15

After January 15, applications will be reviewed on a rolling basis until the class is full.

Clarkson is still offering need-based aid for Fall 2020.





# Credit for exams

---

AP and other exams are accepted for credit.

Advanced placement credit based on tests or examinations (including AP, CLEP, IB, and Clarkson advanced placement and proficiency examinations) are limited to a total of 30 credits.



# Cost of Attendance

---

Clarkson's tuition for the current academic year is \$49,858.

Room and Board is \$16,634.

For issuance of an I-20, the International Center at Clarkson requires documentation of about \$69,000. This can include scholarship funds that students are offered at the time of admission.



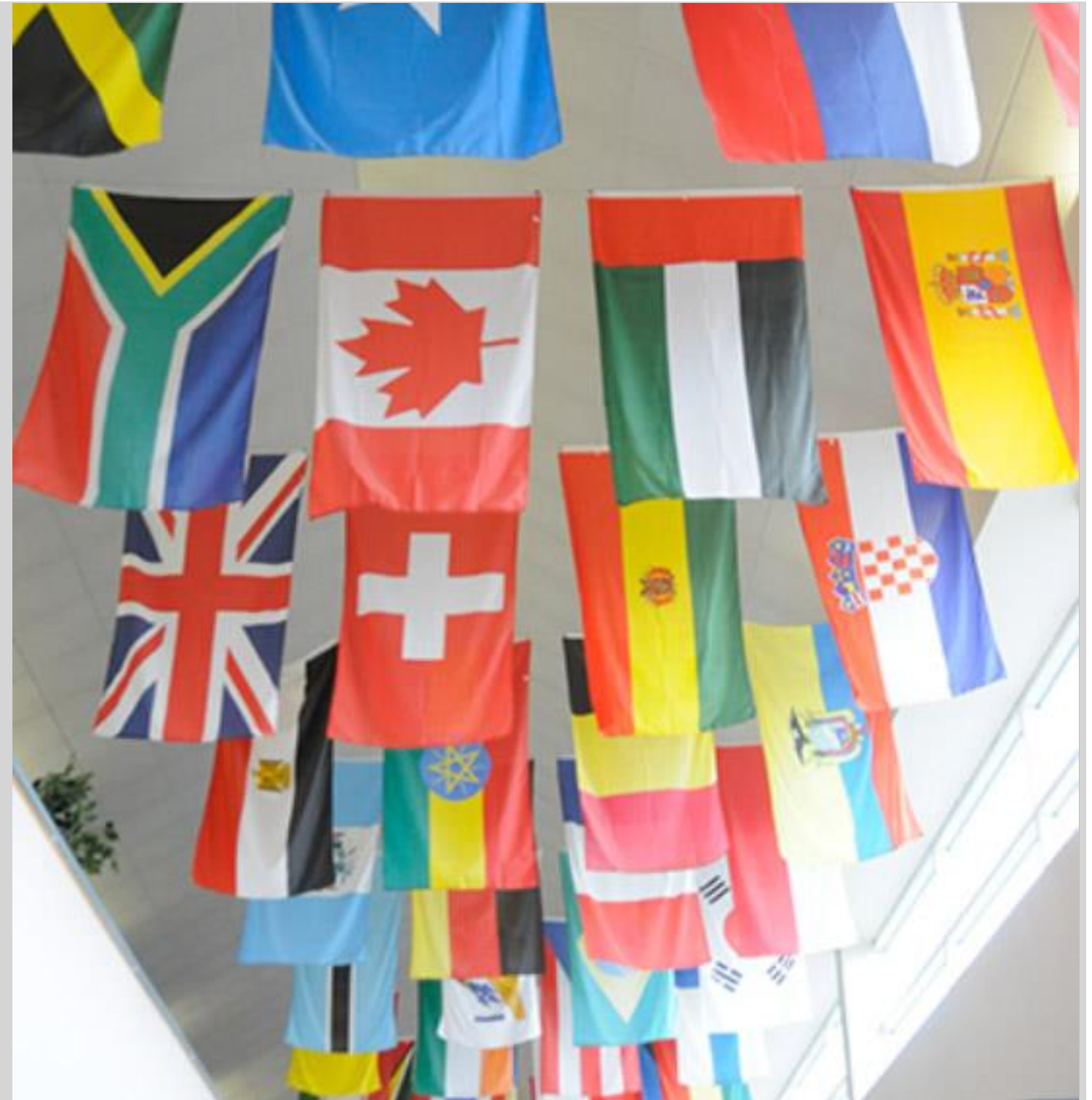
# Scholarships

---

All admitted students are considered for scholarships.

These generally range from \$15,000-\$35,000/year. These are renewed as long as students meet GPA requirements. Amounts are based largely (but not exclusively) on GPA and SAT/ACT scores.

All other scholarships are listed on this page: <https://www.clarkson.edu/undergraduate-admissions/scholarships-and-special-awards>





# Student experience

---

Clarkson participates in sports at NCAA Division III level in most athletics.

Men's and Women's hockey are in NCAA Division I. Ice hockey is a big part of Clarkson social life.

Clarkson offers a wide range of music and theater options.

A number of clubs appeal to international student interests, like table tennis, cricket, and Premier League Watchers Club.

Living in New York's "north country" offers a unique opportunity to try out winter sports.





# Residential life

---

Clarkson University is a four-year residential campus. Most undergraduate students live on campus.

Living Learning Communities offer shared residential experience for students to live together and cater to their academic, social, and personal needs – examples include Outdoor Enthusiasts, a Gamers Floor, Women in Science & Engineering, Cultural Enrichment, and Sustainability.

Students can stay on campus during breaks. If they study or research over the summer, housing is available then as well.





# Clarkson

Graduate Programs & Admission



Types of graduate degrees available at Clarkson University  
Requirements  
Application process  
Funding your studies  
Visas and documentation  
Application timeline

# Types of degrees

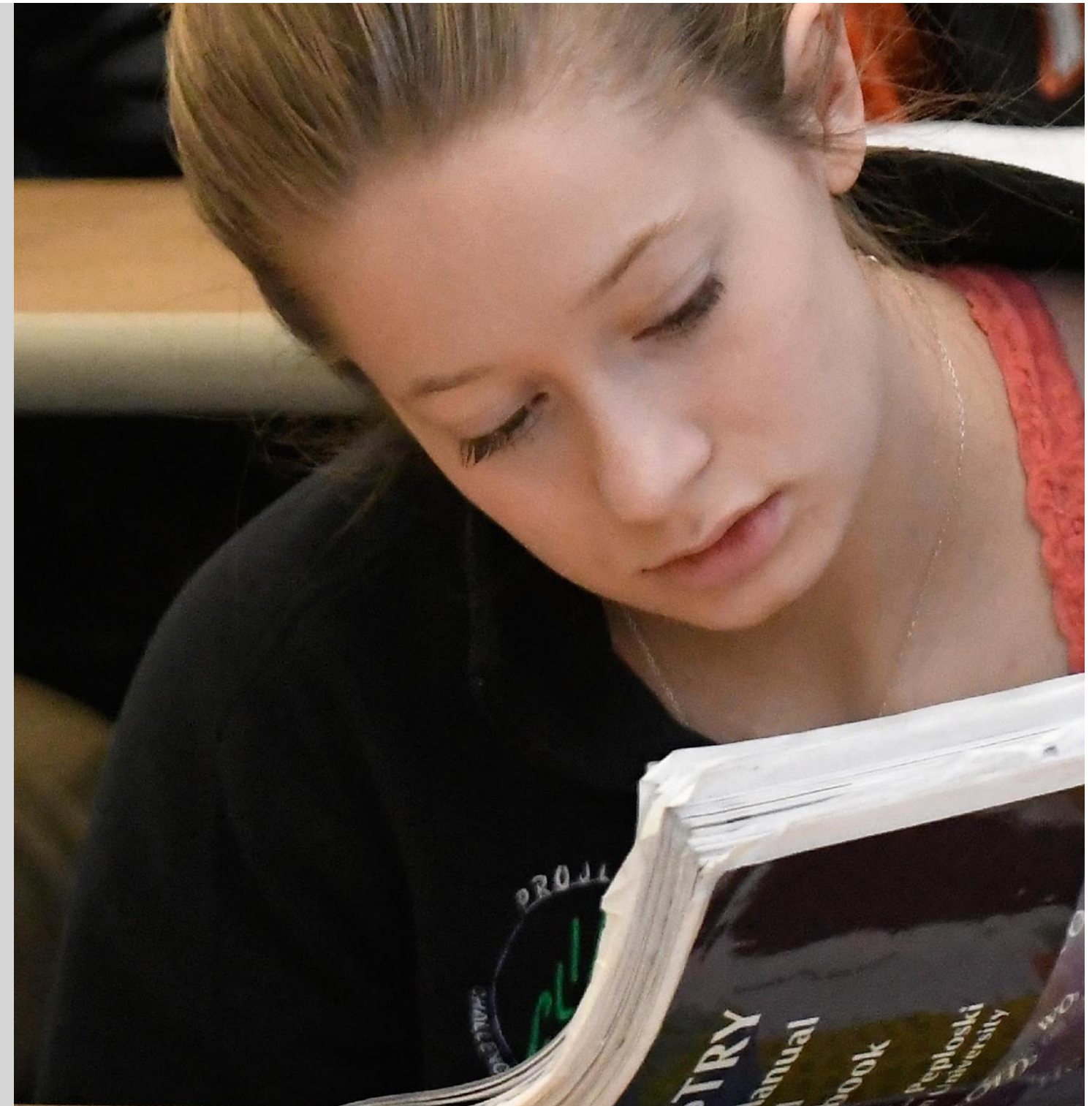
---

Degrees fall into a few main categories:

Research

Project

Coursework-only



# Program of Study – Potsdam (main campus)

---

Basic Science MS  
Bioscience & Biotechnology MS, PhD  
Business Administration MBA  
Chemical Engineering MS, PhD  
Chemistry MS, PhD  
Civil & Environmental Engineering MS, PhD  
Computer Science MS, PhD  
Construction Engineering Management MS-CEE  
Electrical and Computer Engineering PhD  
Electrical Engineering MS  
Engineering Science MS, PhD  
Environmental Politics & Governance MS  
Environmental Science & Engineering MS, PhD

Materials Science & Engineering PhD  
Mathematics MS, PhD  
Mechanical Engineering MS, PhD  
Occupational Therapy MS  
Physical Therapy DPT  
Physician Assistant Studies MS  
Physics MS, PhD  
Power Engineering, MS-CEE



# Programs of Study - CRC

---

Clinical Leadership in Healthcare Management MS  
Electrical Engineering MS  
Energy Systems, MS  
Engineering and Management Systems, MS  
Healthcare Data Analytics MS  
Healthcare Management MBA  
Master of Arts in Teaching MAT  
Mechanical Engineering MS





# Admission Requirements

- Application form
- Statement of Purpose (“essay”)
- Transcripts – only post secondary
- Resume/CV
- Letters of recommendation (2-3)
- Test scores
  - English proficiency
  - Other (GRE, GMAT, MAT)

The screenshot shows a web browser window displaying the Clarkson University Graduate School Application Management page. The page header includes the Clarkson University logo and navigation links for About, Programs, Admissions, Locations, Current Students, Alumni, and Research. The main content area is titled "Application Management" and includes a "Not logged in" notification. Below this, the "What You'll Need" section lists requirements for the application, such as a completed application form, 3 letters of recommendation, transcripts, resume/CV, test scores, and a personal statement. The page also provides links for "Returning users" and "First-time users" to either log in or create an account. The browser's address bar shows the URL: https://gradapp.clarkson.edu/apply/7\_ga=2.92924573.1841578452.1520860391-1675433923.1515593559. The Windows taskbar at the bottom shows the time as 3:10 PM on 3/12/2018.

# Application process

---

Complete application form

Upload all required documents

Follow up with recommenders

Submit application

Application will be reviewed by a committee at the University

Await decision





# Test scores

---

## English Proficiency

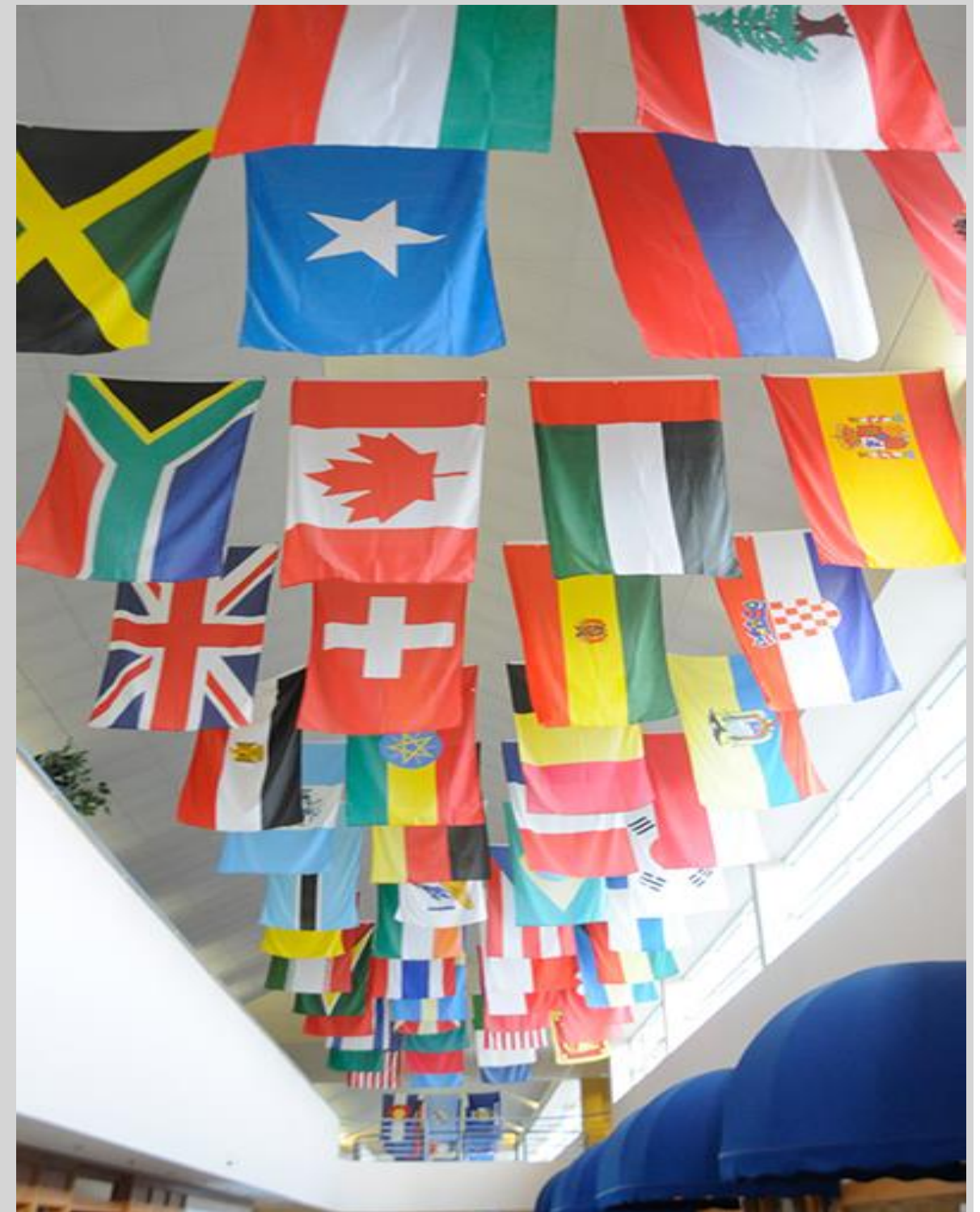
- TOEFL – 80
- IELTS – 6.5
- PTE – 56
- Duolingo English Test – 61

## GRE – no minimum

Averages are 148 V, 159 Q

## GMAT – no minimum

Scores above 550 qualify for scholarship



# Deadlines?

---

There are no formal deadlines!

Clarkson University follows a rolling admission process. This means that applications are reviewed as soon as they are complete.

We are still accepting applications for Fall 2020.

For maximum admission and funding consideration, please submit a complete application by:

- February 15<sup>th</sup> for Fall semesters
- October 15<sup>th</sup> for Spring semesters

# Funding your studies

---

The most frequent question we get is about how to get full funding.

Most fully funded offers go to PhD students.

Decisions are based on the match between student's research interest and experience with departmental needs.





# Funding your studies

---

International students can also be considered for scholarships, assistantships and part-time on-campus employment.

Education loans are a popular source of funding as well.

At the master's level, scholarships are the most frequent form of financial assistance.



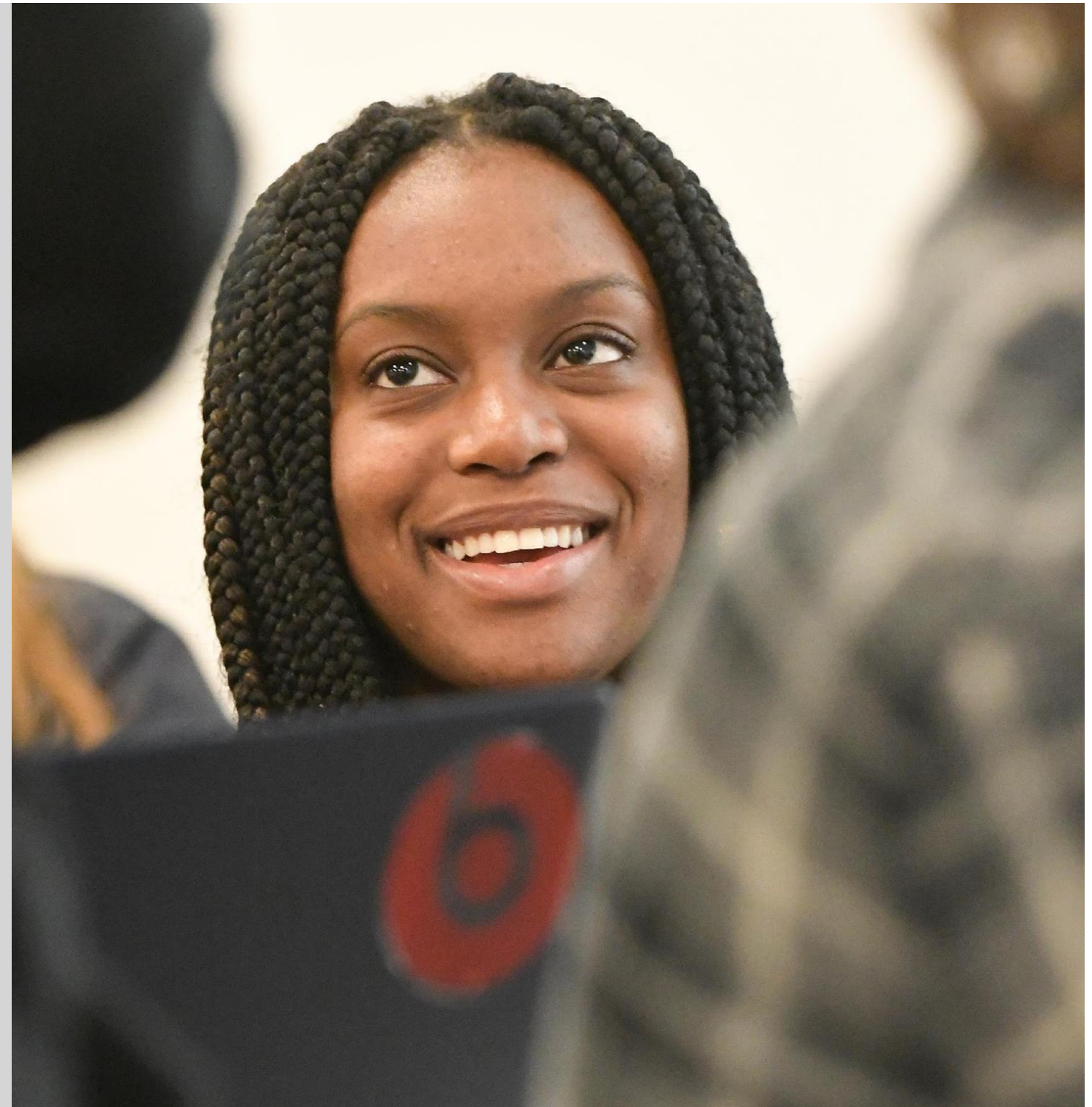


## Visas and documentation

---

After admission, you make an enrollment deposit. Then our International Center will work with you to prepare an I-20, the document you need in order to obtain a student visa. This requires the bank statements.

Clarkson is currently issuing I-20s, so students will have them when consulates re-open.





# A note on the current political climate in the US

---

- Keep in mind that the government is not the same as everyday people.
- Most people are very supportive of international students coming to study in the US.
- “College towns” like Potsdam, NY, where Clarkson is located, are especially welcoming to your students.





Questions?