

The background image is a composite of an industrial scene and digital data. On the left, there are large, cylindrical industrial storage tanks. To the right, a complex network of pipes and structural steel is visible, illuminated by warm lights. Overlaid on this scene are various digital elements: a large circular gauge in the top right corner, a grid of data points and lines across the center, and several smaller circular icons and rectangular boxes containing text or symbols. The overall color palette is dominated by blues, greys, and oranges, creating a high-tech, industrial atmosphere.

# CORROLYTICS™

**Revolutionizing and Digitizing Corrosion Monitoring and  
Detection for Industrial Assets**

[www.corrolytics.com](http://www.corrolytics.com) | [a.sadek@corrolytics.com](mailto:a.sadek@corrolytics.com)





# **Microbial Corrosion (MIC) is a \$1 Trillion Problem for Industrial Assets**





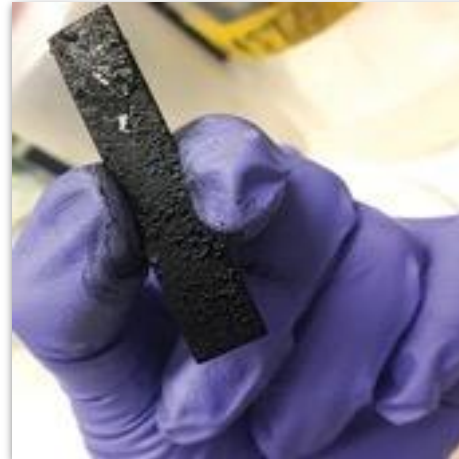
**Global corroded steel replacement  
accounts for 1200 Mt CO<sub>2</sub> each year!**

# Traditional Measurement Methods are Slow and Inaccurate



**On-Site Test kits  
(5-15 days)**

**Only shows microbes in fluid  
not pipeline surface, false  
negatives**



**Coupon left in pipeline  
(3 months – 1 year)**

**Too late to mitigate as the  
damage already occurred**

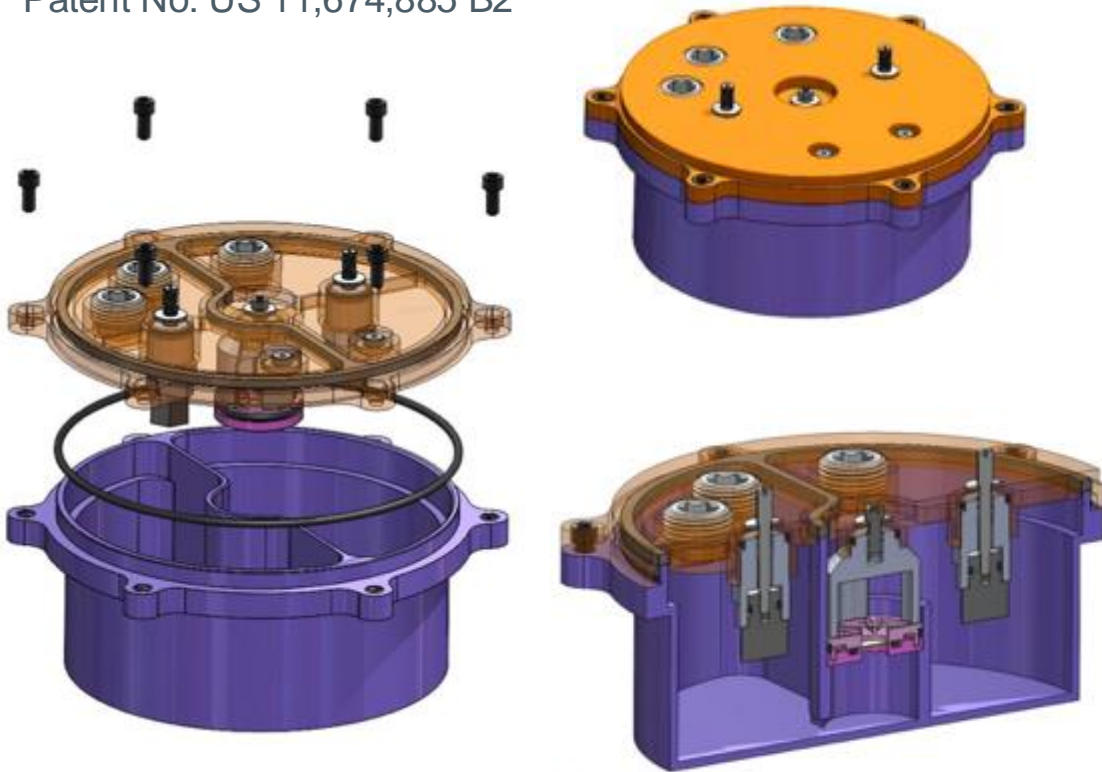


**Off-Site Lab Testing  
(1-3 Months)**

**Contamination and Lab error  
risk**

# Corrolytics' Patented Technologies Solves All Three of Those Problems

Patent No: US 11,674,885 B2



- **Fast:** Results in **hours** rather than months
- **Accurate:** On-site detection, **85% accuracy**, prevents contamination
- **Effective:** Differentiating **Microbial Corrosion** from other types



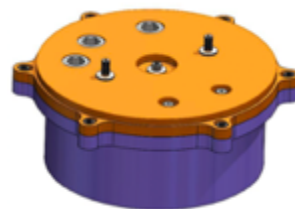
# Solution Offering

## In-Lab Testing Services



MIC In-Depth Testing Using  
Corrolytics Technology

## Onsite, Near Real-Time Test Kit Hardware and Software



MIC kit  
Consumable



Electronics  
One time purchase



Software licensing  
Yearly Subscription

# Seamless to Use and Integrate in Existing Operations

## Step 1



Collect fluid samples from  
Assets

## Step 2



Insert the fluid samples  
in the Test Kit

## Step 3



Receive corrosion rates



# Rugged Electronics for Precise Data Transmission & Analysis

**Geotagging Capabilities:** Tracks exact locations for better asset management.

**Satellite Data Transmission:** Sends data remote areas.

**85% Data Accuracy:** Provides informed decision-making.

**Rugged Design:** Built for harsh environments and rough terrain, ensuring durability and reliability.





# Software: Comprehensive Corrosion Monitoring and Predictive Insight Platform



**Data History  
& Insights**



**Predictive and  
Failure Analysis**

# Corrolytics' Value Proposition



Optimizing Biocide Use




Extend asset lifespan



Prevent shutdown  
losses  
\$1.8M/day\*



# Corrolytics' Competitive Advantage

Company Name							
Determine Presence of microbes	Yes	Yes	Yes	Yes	Yes	Yes	Yes
Differentiate microbial Corrosion	Yes	No	No	No	No	No	No
Provide microbial Corrosion Rate	Yes	No	No	No	No	No	No
Evaluate Biocide Efficacy	Yes	No	Only Biofilm Thickness	No	No	No	No

Green: advantage Red: disadvantage



## Advisors

## Founding Team



Anwar Sadek  
CEO, Co-Founder



Sai Prasanna Chinthala  
CTO, Co-Founder



Chelsea Monty-Bromer  
Scientific Adviser and Co-Founder



Dave Lafferty  
Energy Business Dev  
Advisor



Larry Kremer  
Energy Business Dev  
Advisor



John P. Anerousis  
CBDO



Gene Groys  
EIR  
Jumpstart & BOUNCE



Jim Lemay  
Corporate Development  
Executive



Paul Stupay  
Chief Strategist & Founder

## Supporting Organizations





# Oil & Gas is Our Target Beachhead Market

The financial impact of corrosion exceeds **\$13.4 Billion** and **MIC** alone is more than **\$2 Billion**.

# US Oil & Gas is ~10% of TAM



\$9 Billion

**TAM**

Global MIC Monitoring &  
Control (M&C)

\$4 Billion

**SAM**

U.S. MIC M&C

CAGR 5.1% 2022-2027

\$800  
Million

**SOM**

U.S. Oil & Gas M&C



# Go-To-Market, Sales, and Mfg. Strategy

## Strategic Alliance

**Partner with major oil and gas companies.**

**Partner with Chemical Service providers for sales & services channels.**

## Direct Sales

**Leverage existing relationships from our 300+ Customer Discovery contacts**

**In-lab Testing**

## Marketing

**Present at AMPP Conference**

**Corrosion Magazine Advertisement**

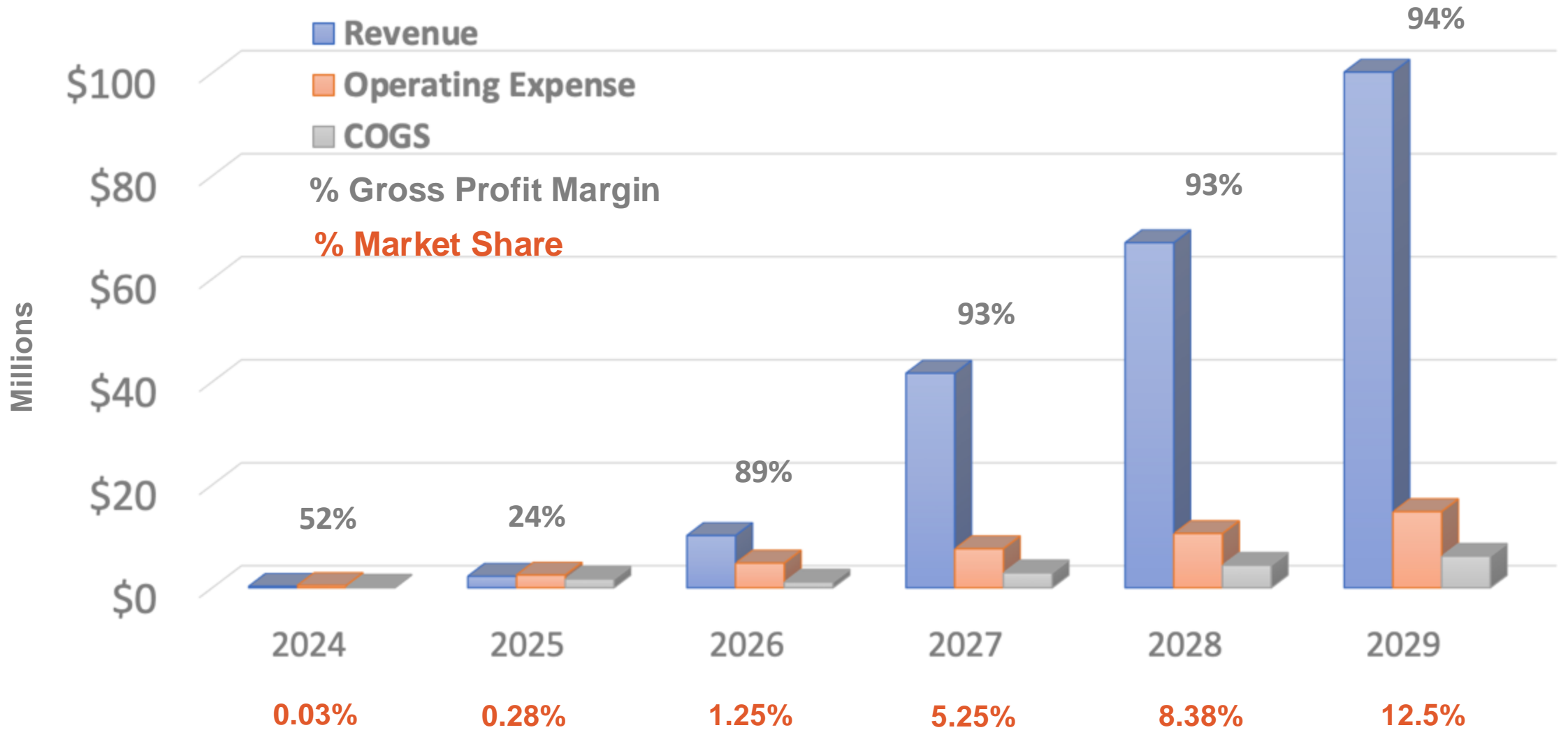
**Publish Case Studies and Research Journals**

## Manufacturing

**Third-party Mfg. relationship established**

**Ready to scale as needed**

# O&G Financial Projections





# Traction Progress: Key Milestones and Achievements

Contracted Revenue from In-Lab testing • Q4 2023: \$100,000+ • 2024: secured contract \$300K

## Customers



Hilcorp Alaska

## Raised \$1M working capital



National  
Science  
Foundation



Department of  
Development



innovat!onfund

## Technology Readiness Level: 6

Fully validated  
prototype using  
real-world  
samples

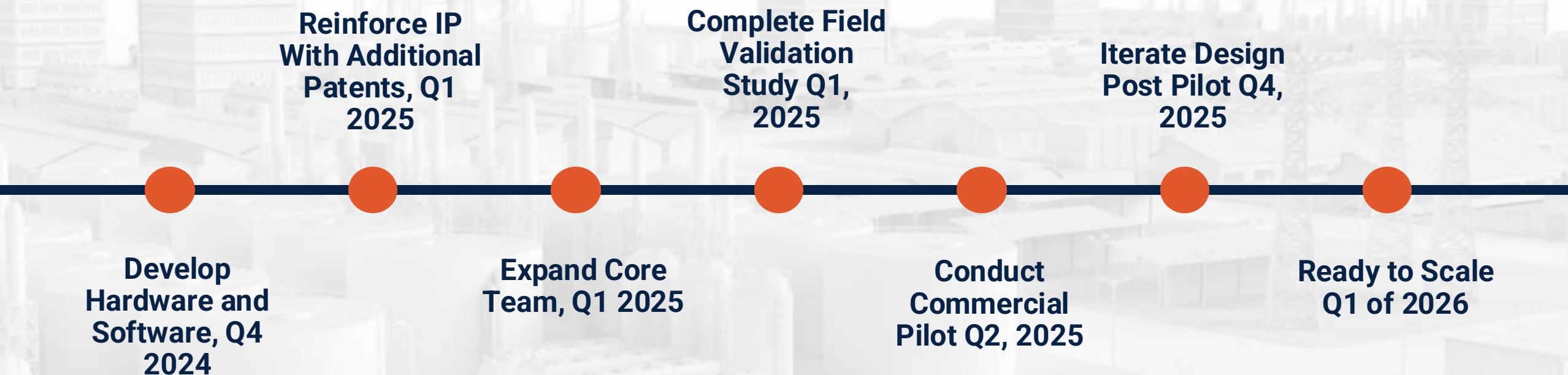
## Awarded

Most Promising  
Energy Tech  
Company &  
Peoples Choice  
Award

at the 2024 Rice  
Alliance 21<sup>st</sup>  
Annual ETVF

# Securing \$3M in Seed Funding: Fueling Our Next Growth Phase

## Use of Proceeds to reach TRL 9



**We are currently seeking additional Industrial Partners to deploy our technology to enhance asset integrity**

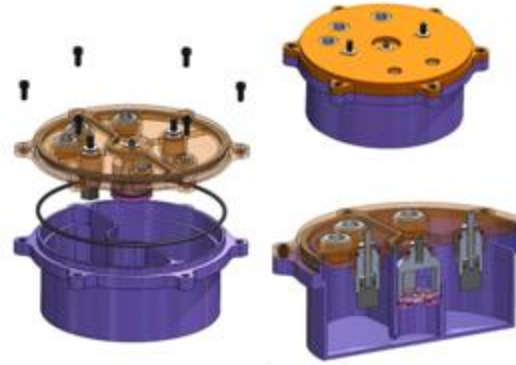


# Why Invest Now?



## Team

Corrolytics has  
the right people  
with the right  
know-how



## Validated Unique Technology

An innovative  
leap, not just  
incremental



## Traction

Outstanding  
market traction  
with promising  
growth



The background of the slide is a composite image. On the right, a man in a white hard hat and a high-visibility orange and blue safety vest stands in profile, looking towards the left. The background behind him is a blurred industrial setting with pipes and machinery. Overlaid on the entire image is a complex network of white lines and circular nodes, resembling a digital or data network. Several circular icons with different symbols (like a gear, a lightbulb, and a person) are scattered throughout the network. The overall color palette is dominated by blues, greys, and the orange of the worker's vest.

*Thank you*

**CORROLYTICS**<sup>TM</sup>

For more information, contact:  
Corrolytics Founder and CEO, Anwar Sadek

[a.sadek@corrolytics.com](mailto:a.sadek@corrolytics.com) | [www.corrolytics.com](http://www.corrolytics.com) | Cell: (412) 980-8129